



SterlingTM
TAKES YOU TO THE NEXT LEVEL

Model's
**ANATOMICAL, BOTANICAL, ZOOLOGICAL
CATALOGUE**

SERVING SCIENCE SINCE 1965

WHY STERLING

UNMATCHED QUALITY AT
AFFORDABLE PRICES

With your purchase you obtain the highest quality at the lowest prices.

SWIFT DELIVERY

All orders are processed on the same day of the receipt of technically & commercially clear purchase order. We have an extensive range of products on site in our warehouse and can deliver most of the equipment within just a few days.

REGULAR UPGRADATION

We at Sterling continue to develop new products and innovate our product processes. For that reason it might be the case that actual products sometime appear slightly different from the ones illustrated here in the catalogue.

QUALITY MANAGEMENT

Sterling has obtained a quality approval certification for service, products & organizational process according to ISO 9001:2008 quality management system.

WELCOME

TO THE WORLD OF STERLING. WE ARE SURE YOU WILL ENJOY MAKING YOUR SELECTION FROM OUR LATEST COLLECTION OF EDUCATIONAL GOODS.

As one of the leading manufactures & suppliers of scientific laboratory equipments Sterling manufacturing co. was established in 1965,till 1989 the concentration of the business was only in the domestic market., but with the opening of the Indian economy and liberalization policies started by the govt. of India.

The company established its export section and started to manufacture and export various science and educational requisites, colleges and international market. Since inception, what has changed, is the range of products we have introduced over the time to serve every need in the industry, We have our own-in-house manufacturing units, so as to have total control over Quality and Production with skilled staff.

STERLING™ dedication to the service of Scientific Educational Goods is the rich heritage of the company which continues today and will be fostered in future too.

FOR ADDITIONAL TECHNICAL SALES ENQUIRIES

Please call 0091 98120 40405, 00919671888088

Email : info@sterlingco.com



CONTACT INFORMATION



Off. : +91-171-2640405
(5 Huntinglines)
Sales : +91-171-2653125
Direct : +91-171-2630707
Ext. : +91-171-4001405
Factory: +91-171-4001905
GSM : +91-9812040405



0091-171-2653125



info@sterlingco.com
sales@sterlingco.com



Sterling Manufacturing Company
4365, Ground Floor, Science Market,
Ambala Cantt. - 133 001 (Hr.) INDIA



For on line Assistance / Helpline
from 10 to 6 IST all Working Days
sales@sterlingco.com



sterling.india



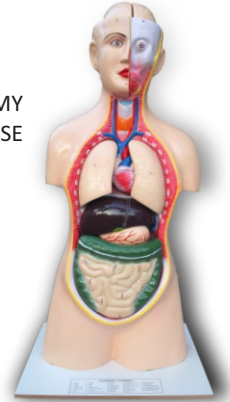
Ordering online is easier
www.sterlingco.com

MODELS (ANATOMICAL)

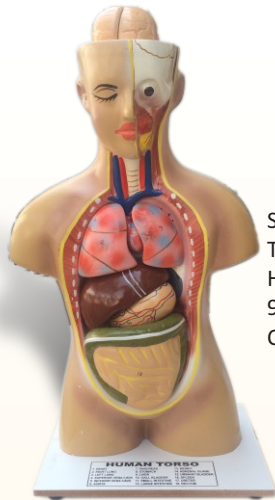
SMC-70101
TORSO SMALL SIZE ADVANCED
MODEL:- HUMAN TORSO BASE SIZE
8" X 12" HEIGHT 20 INCHES, 9 PARTS
DISSECTABLE WITH KEY CARD.



SMC-70105
TORSO LIFE SIZE WITH HEAD ECONOMY
MODEL, 9 PARTS DISSECTABLE ON BASE
WITH KEY CARD SIZE 12"X 18"

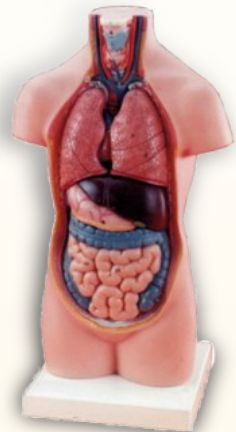


SMC-70106
TORSO LIFE SIFE SEXLESS 12 PARTS MAGNETIC
MADE OF FIBRE PARTS DETACHABLE
THROUGH MAGNETIC SYSTEM



SMC-70102
TORSO SMALL ECONOMY MODEL SIZE
HUMAN SIZED TORSO, HEIGHT 20 INCHES,
9 PARTS DISSECTABLE ON BASE WITH KEY
CARD.

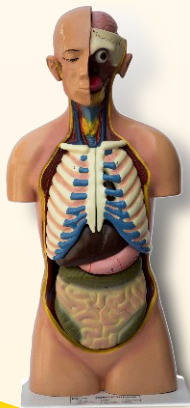
SMC-70107
TORSO WITHOUT HEAD 8 PARTS
DISSECTABLE ON BASE WITH KEY
CARD
SMC-70107/1 SMALL SIZE
SMC-70107/2 MEDIUM SIZE
SMC-70107/3 BIG SIZE



SMC-70103
TORSO MEDIUM SIZE HUMAN TORSO 9
PARTS DISSECT ABLE ON BASE WITH KEY
CARD. HEIGHT 30 INCHES

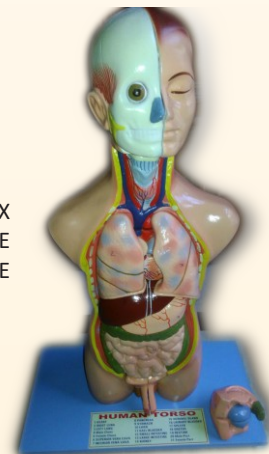


SMC-70108
TORSO LIFE SIZE WITH INTERCHANGEABLE SEX
ORGANS 14 PARTS DISSECTABLE ON BASE WITH
KEY CARD LIFE SIZE

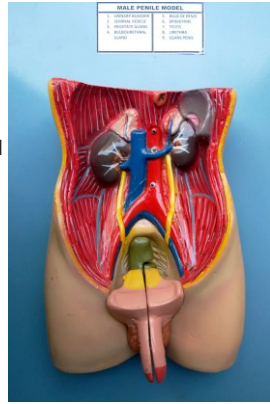
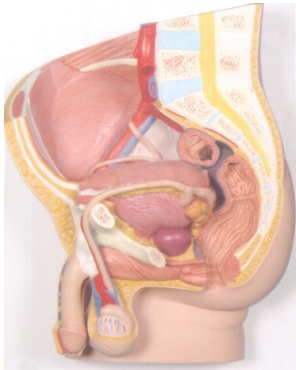


SMC-70104
TORSO LIFE SIZE WITH HEAD
ADVANCED MODEL, 11 PARTS
DISSECTABLE ON BASE WITH
KEY CARD SIZE 12"X 18"

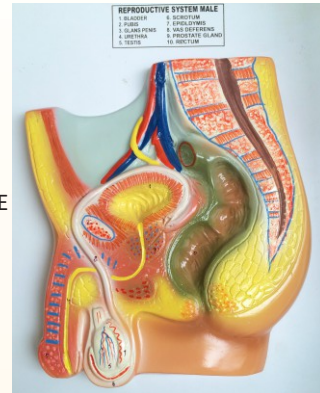
SMC-70110
TORSO SMALL SIZE INTERCHANGEABLE SEX
ORGANS INCHES 14 PARTS INTERCHANGLE
SEX ORGANS HEIGHT 500 MM ON BASE
WITH KEY CARD LIFE SIZE



SMC-70112
PENILE MODEL MALE ON BOARD WITH
KEY CARD



SMC-70114
REPRODUCTIVE SYSTEM MALE 3 D ON BASE,
SIZE 18 INCHES HEIGHT, BASE SIZE 8" X 12"



SMC-70115
REPRODUCTIVE SYSTEM MALE MODEL SIZE
15 X 10 INCH ON BOARD



SMC-70116
REPRODUCTIVE SYSTEM FEMALE 3 D ON
BASE SIZE 18 INCHES HEIGHT, BASE SIZE
8" X 12"

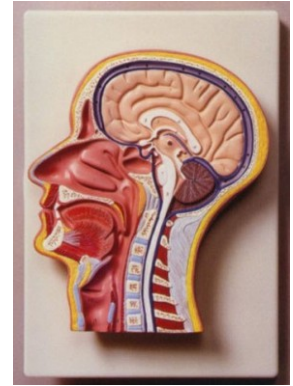


SMC-70117
REPRODUCTIVE SYSTEM FEMALE
MODEL SIZE 15 X 10 INCH ON BASE



SMC-70120
HEAD AND BRAIN ON BASE SIZE
8" x 12" WITH KEY CARD

SMC-70122
HEAD AND NECK L.S ON BOARD
SIZE 16" x 12" WITH KEY CARD



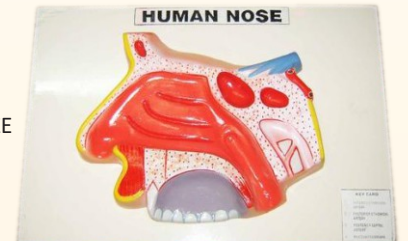
SMC-70125
BRAIN MODEL 4 PARTS ON BASE
SIZE 8" x 12" WITH KEY CARD

SMC-70126
BRAIN, 2 PART ON BASE SIZE 8" x
12" WITH KEY CARD



SMC-70128
NOSE, L.S ON BASE SIZE 6" x 6"
WITH KEY CARD

SMC-70129
NOSE MODEL ON BOARD SIZE
15" x 10" WITH KEY CARD



SMC-70130
EYE 5 TIMES ENLARGED LARGE
SIZE, SEVEN PARTS DISSECTABLE
ON STAND WITH KEY CARD

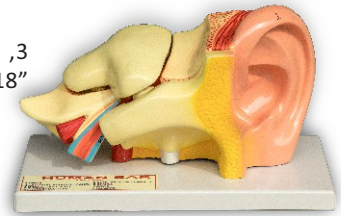


MODELS
(ANATOMICAL)

SMC-70131
EYE, SMALL SIZE ENLARGED
MODEL ON BASE WITH KEY CARD



SMC-70140
EAR ENLARGED, LARGE SIZE ,3
PARTS ON BASE SIZE 10" x 18"
WITH KEY CARD



SMC-70142
TOOTH, MOLAR ON BASE, 2 PARTS
DISSECTABLE WITH KEY CARD

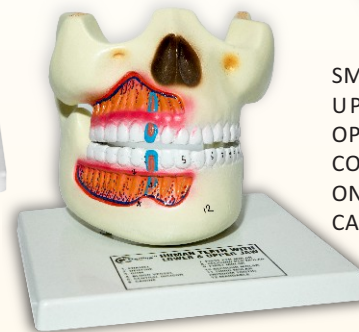


SMC-70132
EYE WITH LID 3D MODEL ON BASE
SIZE 8" x 8" WITH KEY CARD

SMC-70144
DENTAL CARE MODEL :- (MOVABLE
MOVEMENT 5 TIMES ENLARGED) ON
BASE PLASTIC WITH BRUSH



SMC-70133
EYE IN BODY ORBIT ON BASE
SEVEN PART DISSECTABLE, THREE
PARTS MUSCLES DISSECTABLE
MOUNTED ON EYE BONE MUSCLE
FITTED ON BASE SIZE 8" x 12"
WITH KEY CARD

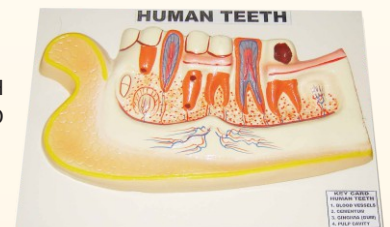


SMC-70145
UPPER & LOWER JAW JAW
OPENING THRU SPRING ACTION
COLOURED LARGE SIZED MODEL
ON BASE SIZE 8" x 12 " WITH KEY
CARD

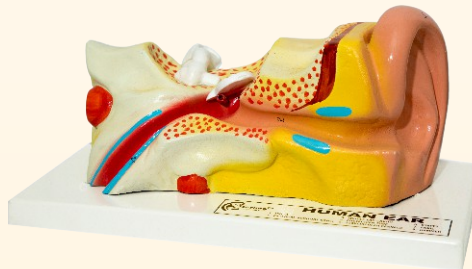


SMC-70134
EYE IN BONY BASE, 5 TIMES
ENLARGED SEVEN PARTS EYE
DISSECTABLE PARTS, MOUNTED
ON EYE BONE . FITTED ON BASE
SIZE 8" x 8" WITH KEY CARD

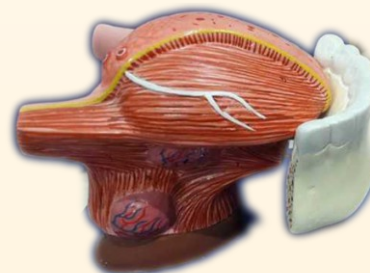
SMC-70146
LOWER JAW WITH TEETH
ON BOARD WITH KEY CARD
SIZE 15" x 10"



SMC-70138
EAR, ENLARGED, SMALL SIZE ,3
PARTS ON BASE SIZE 8" x 12" WITH
KEY CARD



SMC-70147
TEETH WITH TONGUE ON BASE
SIZE 6" x 8" WITH KEY CARD

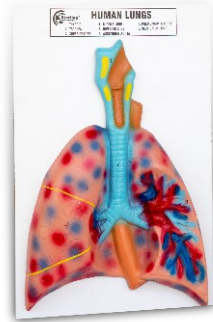


MODELS (ANATOMICAL)

SMC-70148
TONGUE MODEL ON BASE SIZE 6"
x6" WITH KEY CARD



SMC-70160
LUNG MODEL ON BOARD 10 X 15"
WITH KEY CARD



SMC-70150
LARYNX MODEL ON BASE SIZE 6" x 6"
WITH KEY CARD
SMC-70150/1 2 PARTS ON BASE
SMC-70150/2 3 PARTS ON BASE

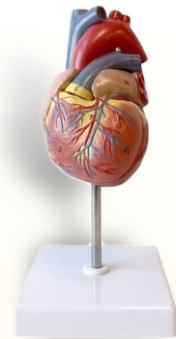


SMC-70163
HEART DISSECTABLE INTO 2 PARTS
ON BASE WITH KEY CARD

SMC-70152
LARYNX WITH TONGUE ON BASE
SIZE 6" x 6" WITH KEY CARD



SMC-70164
HEART DISSECTABLE INTO 2
PARTS, SUPERIOR ON BASE WITH
KEY CARD



SMC-70155
LUNGS WITH HEART MODEL , 7 PARTS
DISSECTABLE ON BOARD SIZE 12" x 18"
WITH KEY CARD



SMC-70165
HEART MODEL 4 PARTS ON BASE
WITH KEY CARD

SMC-70156
LUNGS WITH HEART MODEL , 4 PARTS
DISSECTABLE ON BOARD SIZE 12" x 16"
WITH KEY CARD



SMC-70166
HUMAN HEART 3 PARTS WITH
HOUSED ON MOULDED FRAME
FITTED ON A BASE, LARGE SIZE-10
INCHES X 16 INCHES & HEIGHT 9
INCHES



SMC-70157
LUNG MODEL, RIGHT ON STAND WITH
KEY CARD
SMC-70157/1 MEDIUM SIZE
SMC-70157/2 LARGE SIZE



SMC-70169
NERVE CELL MODEL SIZE 16 X 10
INCHES WITH KEY CARD

MODELS
(ANATOMICAL)



SMC-70170
NEURON MODEL 3 D ON BOARD WITH
KEY CARD SIZE 12" X 18"



SMC-70180
CIRCULATORY SYSTEM MODEL ON
BOARD WITH KEY CARD SIZE 9.5" X 22"

SMC-70172
STOMACH ON BASE WITH KEY CARD
SIZE 4" X 4"



SMC-70181
CIRCULATORY SYSTEM LARGE SIZE
MODEL ON BOARD WITH KEY CARD SIZE
30" X 12"



SMC-70173
STOMACH ON BOARD WITH
KEY CARD



SMC-70182
DIGESTIVE SYSTEM ON BOARD
SIZE 9.5 X 18 INCH WITH KEY CARD

SMC-70174
LIVER WITH GALL BLADDER ON BASE
WITH KEY CARD SIZE 4" X 4"



SMC-70183
DIGESTIVE SYSTEM ON BOARD LARGE
Size 12 x 32 Inch WITH KEY CARD



SMC-70176
SKIN ENLARGED 70 TIMES SIZE 15" X
10" ON BOARD WITH KEY CARD

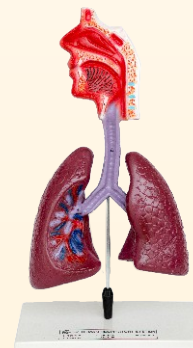


SMC-70184
RESPIRATORY SYSTEM ON BOARD SIZE 9.5 X 18
INCH WITH KEY CARD

SMC-70177
SKIN MODEL 3D ,LARGE SIZE ON STAND
WITH KEY CARD SIZE 6" X 12" HEIGHT
13"

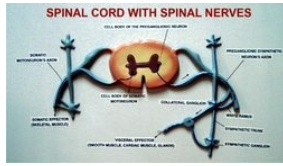


SMC-70185
RESPIRATORY SYSTEM MODEL ON
STAND SIZE 9" X 4.5" X 16"

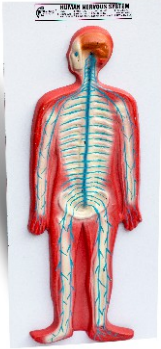


MODELS (ANATOMICAL)

SMC-70188
SPINAL CORD ON BOARD SIZE 12" X 18" WITH KEY CARDX



SMC-70197
URINARY ORGANS WITH INTERCHANGEABLE ORGANS , ON BOARD WITH KEY CARD SIZE 12" x 16"

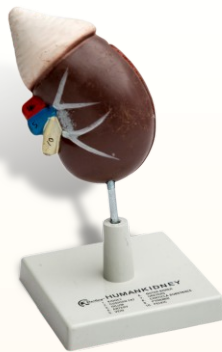


SMC-70190
NERVOUS SYSTEM ON BOARD WITH KEY CARD
SMC-70190/1 SIZE 9" x 21" WITH KEY CARD
SMC-70190/2 SIZE 13" x 32" WITH KEY CARD

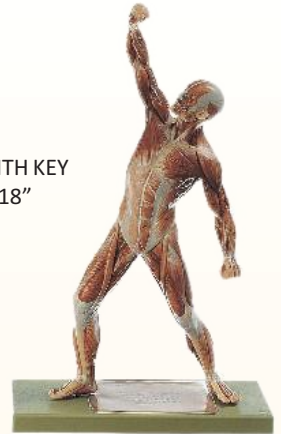


SMC-70199
URINARY SYSTEM DETACHABLE PARTS 3 D ON STAND ,SIZE 8" X 12" HEIGHT 18"

SMC-70191
KIDNEY MODEL ON BASE WITH KEY CARD
SIZE 4" X 4"



SMC-70200
MUSCLE FIGURE ON BASE 3 D WITH KEY CARD BASE SIZE 6" X 12" HEIGHT 18"



SMC-70192
KIDNEY L.S ON BOARD WITH KEY CARD
SIZE 15" x 10"

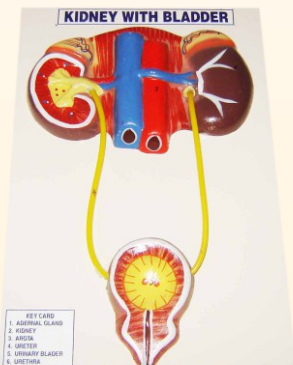
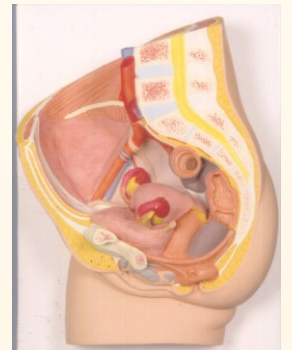


SMC-70201
MUSCULAR SYSTEM MODEL ON BOARD WITH KEY CARD SIZE 12" X 16"

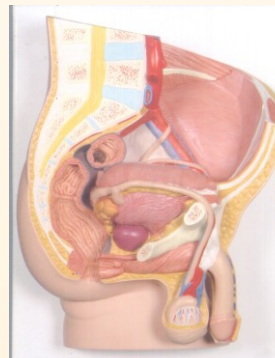
SMC-70194
KIDNEY SECTION NEPHRON GLOMERULUS ON BOARD SIZE 16 x 24" WITH KEY CARD



SMC-70203
PELVIS FEMALE 3D,2 PART ON BOARD
SIZE HEIGHT 14"



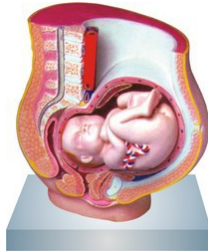
SMC-70195
KIDNEY WITH BLADDER ON BOARD WITH KEY CARD SIZE 15" x 10"



SMC-70204
PELVIS MALE 3D,2 PART ON BOARD
SIZE SIZE" HEIGHT 14"

MODELS (ANATOMICAL)

SMC-70206
PREGNANCY PELVIS WITH BABY 3D MODEL
ON BASE SIZE 8" x 12" ,DETACHABLE BABY
PART



SMC-70220
SKELETON HUMAN (FIBRE), LIFE SIZE



SMC-70208
EMBRYONIC DEVELOPMENT MODEL SET OF
NINE MODELS ALL 3D MODELS ON STANDS
.ALL PARTS ARE DETACHABLE WITH KEY
CARDS SET OF 9



SMC-70221
SKELETON HUMAN (FIBRE), COLOURED
LIFE SIZE

SMC-70210
HIV AID VIRUS, DISSECTABLE 2 PARTS ON
STAND SIZE 6" x 6" HEIGHT 10"



SMC-70222
SKELETON HUMAN (FIBRE), COLOURED
MEDIUM SIZE WITH STAND



SMC-70214
SKULL MODEL, 2 PARTS ORIGINAL SIZE
MOVEABLE JAW

SMC-70223
SKELETON HUMAN ON STAND SMALL
SIZE WITH SHOWCASE

SMC-70215
SKULL MODEL COLOURED 2 PARTS
ORIGINAL SIZE MOVEABLE JAW



SMC-70228
SKELETON STAND FOR LIFE SIZE WITH
CASTOR WHEELS

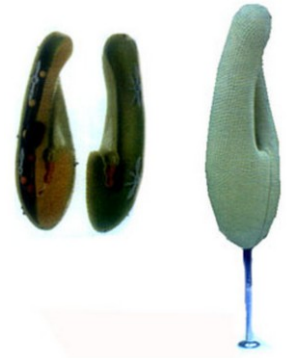


MODELS (ZOOLOGICAL)

SMC-70230
AMOEBIA MODEL COLOURED
ON BOARD SIZE 15" x 10" WITH
KEY CARD



SMC-70238
PARAMECIUM 2 PARTS, ON STAND
WITH KEY CARD



SMC-70231
AMOEBIA PROTEUS 2 PARTS ON
BOARD SIZE 12" x 16" WITH KEY
CARD

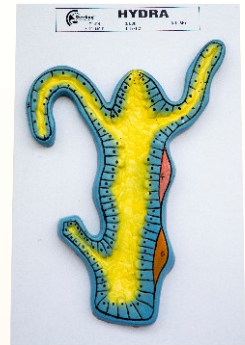


SMC-70239
FROG REPRODUCTIVE ON BOARD
WITH KEY CARD SIZE 15" x 10"

SMC-70232
COCKROACH DISSECTION ON BOARD
WITH KEY CARD SIZE 15" x 10"



SMC-70240
HYDRA MODEL COLOURED MODEL
ON BOARD SIZE 15" x 10" WITH KEY
CARD

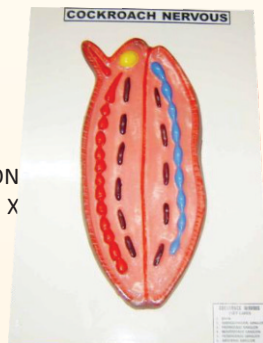


SMC-70233
COCKROACH DIGESTIVE SYSTEM ON
BOARD WITH KEY CARD SIZE 15" X 10"



SMC-70241
SNAKE COBRA MODEL ON BASE SIZE 6"
x 12" HEIGHT 12"

SMC-70234
COCKROACH NERVOUS SYSTEM ON
BOARD WITH KEY CARD SIZE 15" X
10"



SMC-70242
EARTH WORM DISSECTION ON BOARD
SIZE 16" 12" WITH KEY CARD



SMC-70243
SILK MOTH LIFE HISTORY ON BOARD
WITH KEY CARD SIZE 15" x 10"



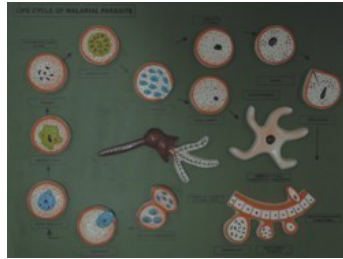
SMC-70236
PARAMECIUM MODEL ON
BOARD SIZE 15" x 10" WITH KEY
CARD

SMC-70244
BUTTERFLY LIFE HISTORY ON BOARD
WITH KEY CARD SIZE 15" x 10"

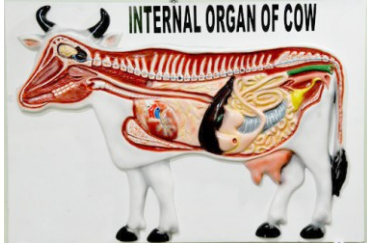


MODELS
(ZOOLOGICAL)

SMC-70245
MALARIAL PARASITE LIFE HISTORY SIZE 14" x 20" WITH KEY CARD



SMC-70251
FROG HEART ON BOARD WITH KEY CARD SIZE 12" X 16"



SMC-70246
COW ORGAN MODEL ON BOARD SIZE 12" x 18" WITH KEY CARD



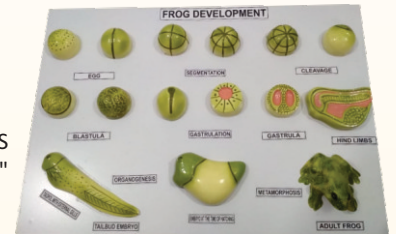
SMC-70252
FROG DIGESTIVE ON BOARD WITH KEY CARD SIZE 12" X 16"

SMC-70247
ANATOMY OF STARFISH ON BOARD SIZE 15" x 10" WITH KEY CARD

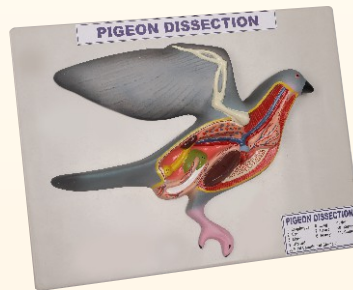
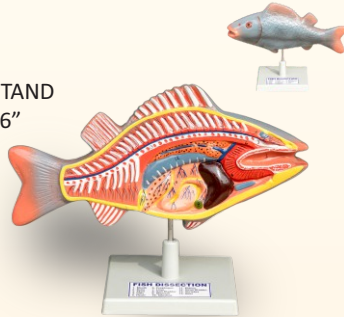


SMC-70248
ANATOMY OF STARFISH 3D MODEL ON STAND SIZE 6" x 6" WITH KEY CARD

SMC-70253
FROG DEVELOPMENT 16 FIGURES ON BOARD WITH KEY CARD SIZE 14" X 20"



SMC-70249
FISH DISSECTION ON STAND WITH KEY CARD SIZE 6" X 6"



SMC-70254
BIRD DISSECTION DOMESTIC PIGEON SIZE 12" x 16" ON BOARD WITH KEY CARD



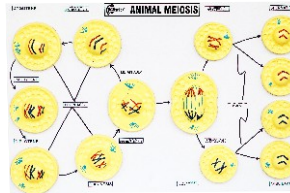
SMC-70250
FROG DISSECTION ON STAND SIZE 6" X 6" WITH KEY CARD

SMC-70255
BIRD DISSECTION DOMESTIC HEN ON STAND SIZE 8" x 12" HEIGHT 12"





SMC-70256
PIGEON MODEL ON STAND SIZE
6" x 12" HEIGHT 12"

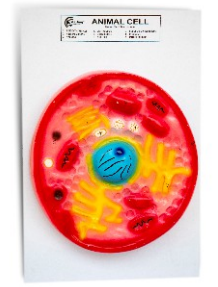


SMC-70262
ANIMAL MEIOSIS MODEL ON
BOARD SIZE 18"X24" (13 FIGURES)
WITH KEY CARD

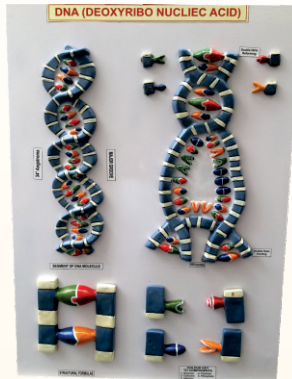
SMC-70257
DEVELOPMENT OF CHICK ON BOARD
WITH KEY CARD SIZE 14" x 20"



SMC-70264
D.N.A. MODEL KIT THREE DIMENSION, ON
STAND HEIGHT 24"



SMC-70258
ANIMAL CELL MODEL ON BOARD
WITH KEY CARD SIZE 15" x 10"



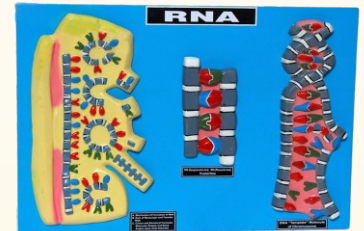
SMC-70265
D.N.A MODEL ON BOARD WITH KEY CARD

SMC-70259
ANIMAL CELL MODEL ON STAND 3D
LARGE SIZE WITH KEY CARD



SMC-70265/1 SMALL SIZE 12" x 16"
SMC-70265/2 BIG SIZE 16" x 24"

SMC-70266
R.N.A MODEL ON BOARD WITH KEY CARD



SMC-70266/1 SMALL SIZE 12" x 16"
SMC-70266/2 BIG SIZE 16" x 24"



SMC-70260
ANIMAL CELL MODEL ON BASE 3D
LARGE SIZE WITH KEY CARD BIG
BASE SIZE 8" x 12" , HEIGHT 13"



SMC-70267
R.N.A. MODEL KIT THREE DIMENSION,
ON STAND HEIGHT 24"

SMC-70261
ANIMAL MITOSIS MODEL ON
BOARD SIZE 16" X 24" (10
FIGURES) WITH KEY CARD

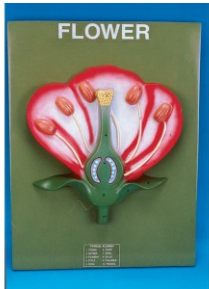
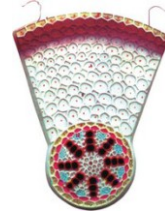


MODELS
(BOTANICAL)

SMC-70270
TYPICAL FLOWER 3D LARGE SIZE ALL PARTS DISSECTABLE WITH KEY CARD ON 5" ROUND BASE



SMC-70285
MONOCOT ROOT T.S ON BOARD WITH KEY CARD ON BASE SIZE 15 x 10"

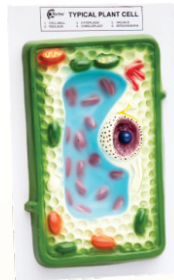


SMC-70271
TYPICAL FLOWER L.S ON BOARD SIZE 12" x 16" WITH KEY CARD



SMC-70286
DICOT ROOT T.S ON BOARD WITH KEY CARD ON BASE SIZE 15 x 10"

SMC-70273
PLANT CELL MODEL SIZE 16" x 10 Inch ON BOARD WITH KEY CARD



SMC-70288
ROOT TIP OF FERN ON BOARD SIZE 15" x 10" WITH KEY CARD



SMC-70275
TYPICAL PLANT CELL ON STAND WITH KEY CARD HEIGHT 13"



SMC-70290
MONOCOT STEM ANATOMY T.S & L.S ON BOARD WITH KEY CARD SIZE 12" x 16"

SMC-70276
TYPICAL PLANT CELL ON BASE LARGE MODEL WITH KEY CARD SIZE 8" x 12", HEIGHT 12"



SMC-70292
DICOT STEM ANATOMY T.S & L.S ON BOARD WITH KEY CARD SIZE 12" x 16"



SMC-70278
PLANT MITOSIS MODEL ON BOARD (10 FIGURES) SIZE 16" X 24" WITH KEY CARD



SMC-70296
LEAF STOMATA MODEL ON BOARD SIZE 15" x 10" WITH KEY CARD

SMC-70279
PLANT CELL DIVISION MEIOSIS MODEL ON BOARD 16" X 24" (12 FIGURES) WITH KEY CARD



SMC-70298
LEAF ANATOMY 3D MODEL ON BASE WITH KEY CARD SIZE 6" x 6"



SMC-70284
ROOT TIP ANATOMY ON STAND WITH KEY CARD



SMC-70299
MONOCOT OF LEAF WITH KEY CARD ON BASE SIZE 15 x 10"

SMC-70300
DICOT OF LEAF WITH KEY CARD ON BASE SIZE 15 x 10"



INDEX

A

AMOEBIA MODEL	8
AMOEBIA PROTEUS 2 PARTS	8
ANATOMY OF STARFISH 3D	9
ANATOMY OF STARFISH	9
ANIMAL CELL MODEL ON BASE 3D	10
ANIMAL CELL MODEL ON STAND 3D	10
ANIMAL CELL MODEL	10
ANIMAL MEIOSIS MODEL ON BOARD	10
ANIMAL MITOSIS MODEL ON BOARD	10

B

BIRD DISSECTION DOMESTIC HEN	9
BIRD DISSECTION DOMESTIC BOARD	9
BRAIN MODEL 4 PARTS	2
BRAIN, 2 PART ON BASE	2
BUTTERFLY LIFE HISTORY	8

C

CIRCULATORY SYSTEM LARGE SIZE	5
CIRCULATORY SYSTEM MODEL	5
COCKROACH DIGESTIVE SYSTEM	8
COCKROACH DISSECTION ON BOARD	8
COCKROACH NERVOUS SYSTEM	8
COW ORGAN MODEL	9

D

D.N.A MODEL ON BOARD	10
D.N.A. MODEL KIT	10
DENTAL CARE MODEL	3
DEVELOPMENT OF CHICK ON BOARD	10
DICOT OF LEAF	11
DICOT ROOT T.S ON BOARD	11
DICOT STEM ANATOMY	11
DIGESTIVE SYSTEM ON BOARD LARGE	5
DIGESTIVE SYSTEM ON BOARD	5

E

EAR ENLARGED, MEDIUM SIZE	3
EAR ENLARGED,LARGE SIZE	3
EAR, ENLARGED, SMALL SIZE	3
EARTH WORM DISSECTION	8
EMBRYONIC DEVELOPMENT	7
EYE 5 TIMES ENLARGED	2
EYE IN BODY ORBIT	3
EYE IN BONY BASE	3
EYE WITH LID 3D	3
EYE, SMALL SIZE ENLARGED	3

F

FISH DISSECTION ON STAND	9
FROG DEVELOPMENT 16 FIGURES	9
FROG DIGESTIVE ON BOARD	9
FROG DISSECTION ON STAND	9
FROG HEART ON BOARD	9
FROG REPRODUCTIVE ON BOARD	8

H

HEAD AND BRAIN ON BASE	2
HEAD AND NECK L.S	2
HEART DISSECTABLE 2PARTS SUPERIOR	4
HEART DISSECTABLE	4
HEART MODEL 4 PARTS	4
HIV AID VIRUS	7
HUMAN HEART 3 PARTS	4
HYDRA MODEL COLOURED	8

K

KIDNEY L.S ON BOARD	6
KIDNEY MODEL ON BASE	6
KIDNEY SECTION NEPHRON	6
KIDNEY WITH BLADDER ON BOARD	6

L

LARYNX MODEL ON BASE	4
LARYNX WITH TONGUE	4
LEAF ANATOMY 3D MODEL	11
LEAF STOMATA MODEL	11
LIVER WITH GALL BLADDER	5
LOWER JAW WITH TEETH	3
LUNG MODEL ON BOARD	4
LUNG MODEL, RIGHT ON STAND	4
LUNGS WITH HEART MODEL	4
LUNGS WITH HEART MODEL, 7 PARTS	4

M

MALARIAL PARASITE LIFE	9
MONOCOT OF LEAF ON BASE	11
MONOCOT ROOT T.S ON BOARD	11
MONOCOT STEM ANATOMY	11
MUSCLE FIGURE ON BASE	6
MUSCULAR SYSTEM MODEL	6

N

NERVE CELL MODEL	4
NERVOUS SYSTEM ON BOARD	6
NEURON MODEL	5
NOSE MODEL ON BOARD	2
NOSE, L.S ON BASE SIZE	2

P

PARAMECIUM 2 PARTS	8
PARAMECIUM MODEL	8
PELVIS FEMALE 3D	6
PELVIS MALE 3D	6
PENILE MODEL MALE	2
PIGEON MODEL ON STAND	10
PLANT CELL DIVISION MEIOSIS	11
PLANT CELL MODEL SIZE	11
PLANT MITOSIS MODEL ON	11
PREGNANCY PELVIS WITH BABY	7

R

R.N.A MODEL KIT 3D	10
R.N.A MODEL ON BOARD	10
REPRODUCTIVE SYSTEM FEMALE 3 D	2
REPRODUCTIVE SYSTEM FEMALE	2
REPRODUCTIVE SYSTEM MALE 3D	2
REPRODUCTIVE SYSTEM MALE	2
RESPIRATORY 3D ON STAND	5
RESPIRATORY SYSTEM ON BOARD	5
ROOT TIP ANATOMY ON STAND	11
ROOT TIP OF FERN ON BOARD SIZE	11

S

SILK MOTH LIFE HISTORY ON BOARD	8
SKELETON HUMAN COLOURED LIFE SIZE	7
SKELETON HUMAN COLOURED MEDIUM	7
SKELETON HUMAN LIFE SIZE	7
SKELETON HUMAN ON STAND SMALL	7
SKIN ENLARGED 70 TIMES	5
SKIN MODEL 3D ,LARGE SIZE	5
SKULL MODEL COLOURED	7
SKULL MODEL	7
SNAKE COBRA MODEL	8
SPINAL CORD ON BOARD	6
STOMACH ON BASE	5
STOMACH ON BOARD	5

T

TEETH WITH TONGUE	3
TONGUE MODEL ON BASE	4
TOOTH, MOLAR ON BASE	3
TORSO LIFE SIFE SEXLESS 12 PARTS	1

TORSO LIFE SIZE WITH HEAD ECONOMY	1
TORSO LIFE SIZE WITH HEAD	1
TORSO LIFE SIZE W CHANGEABLE SEX	1
TORSO MEDIUM SIZE	1
TORSO SMALL ECONOMY	1
TORSO SMALL SIZE ADVANCED	1
TORSO SMALL SIZE CHANGEABLE SEX	1
TORSO WITHOUT HEAD 8 PARTS	1
TYPICAL FLOWER 3D LARGE SIZE	11
TYPICAL FLOWER L.S ON BOARD	11
TYPICAL PLANT CELL ON BASE	11
TYPICAL PLANT CELL ON STAND	11

U

UPPER & LOWER JAW	3
URINARY ORGAN MODEL	6
URINARY SYSTEM DETACHABLE PARTS 3D	6



NEED ASSISTANCE
Call +91-171-2640405



Fax Your Order Now
0091-171-2653125



Ordering online is easier
www.sterlingco.com



info@sterlingco.com
sales@sterlingco.com



ALSO DEALS IN
BIOLOGY, CHEMISTRY, HOSPITAL FURNITURE, SURGICAL INSTRUMENTS, MICROSCOPES

STERLING MANUFACTURING COMPANY

4365, Ground Floor, Science Market Ambala Cantt - 133001 (HARYANA) INDIA
Ph. : 0091-171-2640405, 4001405, 4001905,2630707, Fax: 0091-171-2653125
Website : www.sterlingco.com Email: info@sterlingco.com